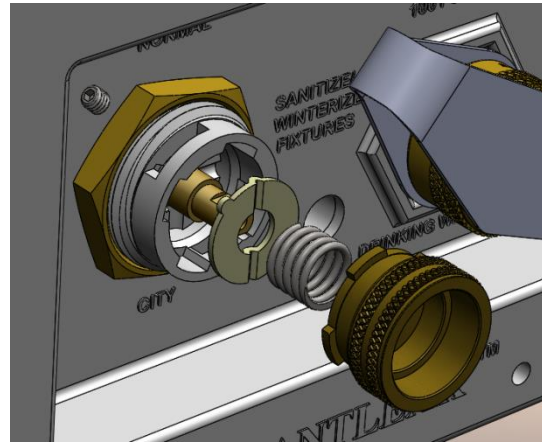


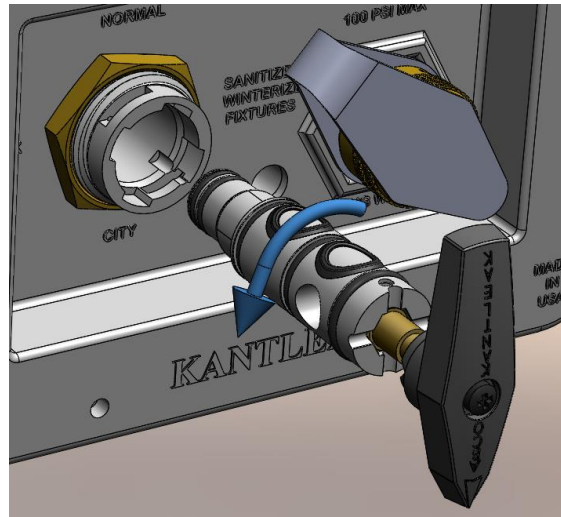
(1) Remove handle screw and handle from the 4-function, fill valve



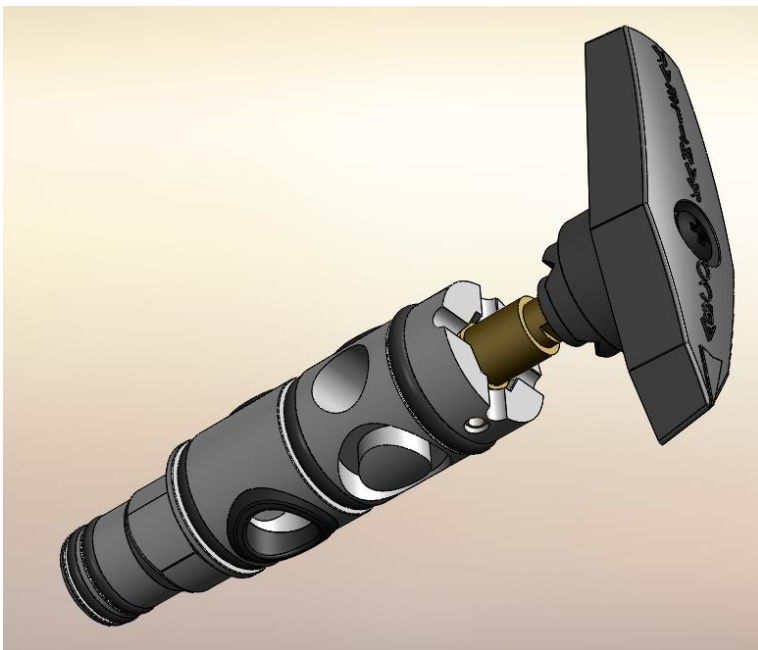
(2) Remove small set screw (5/64 hex) from slot, at upper left quadrant of the plastic body. Push-in round knurled cap, and turn counter clockwise (approx. 1/8 turn) then pull off cap, and remove spring and tabbed "click" washer



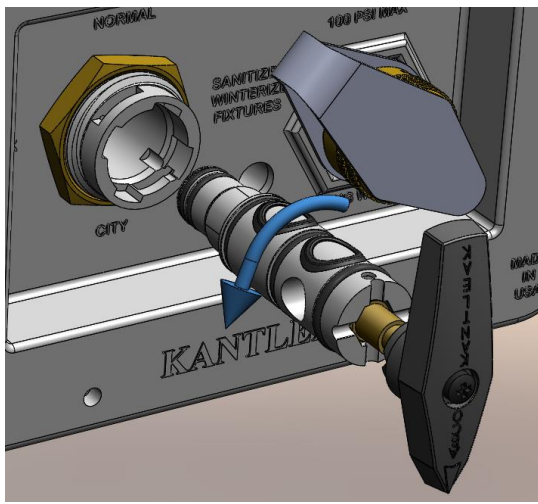
(3) Re-install handle screw and handle back onto the stem of the 4-function, fill



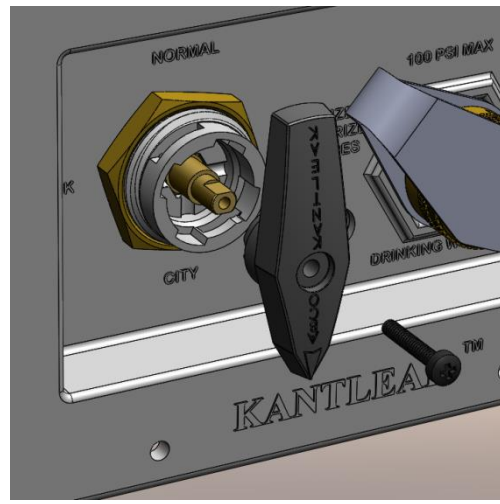
(4) While rotating the handle slowly, pull the valve cartridge out of the valve body.



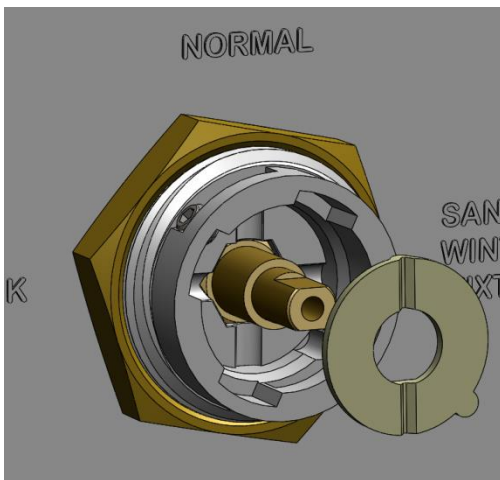
(5) Remove the new, pre-lubed cartridge from packaging, there are 3 rubber seats (one spot has seat purposely left off) and 5 o-rings on the cartridge. Remove the handle/screw from old cartridge and move to new cartridge. Make sure the "pointer" of the handle is over the seat that has the opening in the center (and empty seat pocket)



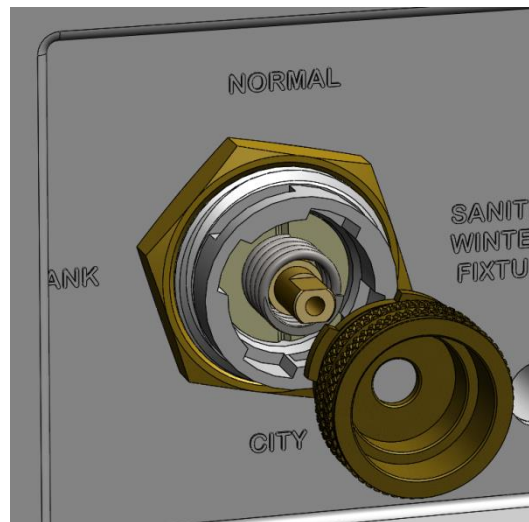
(6) While rotating the handle slowly, push the new valve cartridge into the valve body until fully seated. Stop with the handle pointing down (City position)



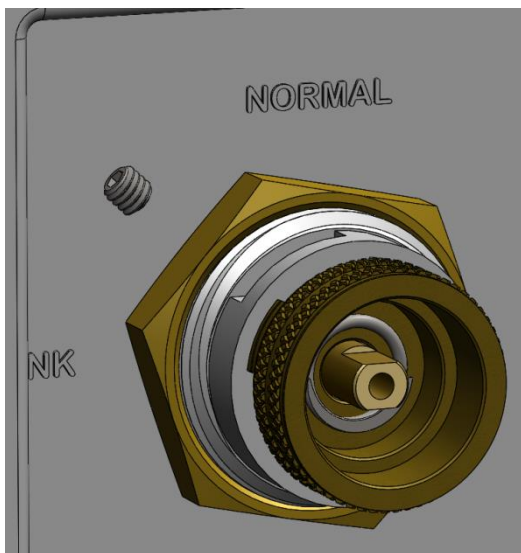
(7) Remove the handle screw and handle off of the 4-function, fill valve again



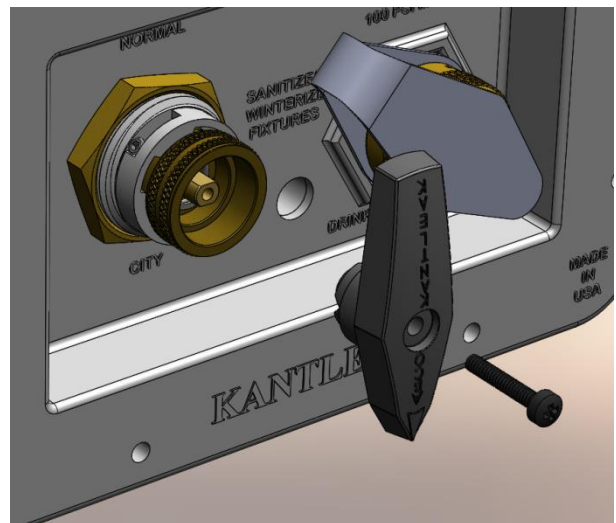
(8) Place "Click" washer, back into valve with the formed, raised side toward the cartridge and the semi-circular locating tab into the internal groove



(9) Place spring over valve stem and onto click washer. Align the tabs on the cap, with the slots in the valve body and push onto spring until cap can turn clockwise (approx 1/8 turn) and lock into place.



(10) Re-thread the set screw into the edge of the cut-out, preventing cap from turning



(11) Re-install handle and screw